

VEHICLE DETAILS

Year: 2008

Make: Tiffin

Model: 40 foot, Phaeton QTH

VIN: 4UZAB2BS98CAB8462

Location: Winter Park, Florida

Mileage: ~~36,000~~ 39,250

Description: (* denotes upgrades)

- Freightliner Chassis
- Allison 6-speed transmission
- Onan 8kw generator
- Automatic HWH Leveling Jacks
- Whirlpool Washer and Whirlpool Dryer
- King Bed with Select Comfort Mattress
- Central Vac
- Solid Surface Countertops
- Convection/Microwave Oven
- 3 Gas Burner Countertop Stove
- Free Standing Dinette
- Leather Air-Enhanced hide a bed Sofa
- Tile Floors
- 2 Vanities with Sinks
- Flex steel Pilot/Copilot Chairs
- Two Forced Air Furnaces
- Three Air Conditioning Units with heat pump (1 AC Added)*
- Maxx Air Covers*
- Automatic Awning with Wind Sensor
- 4 Televisions 3 interior; 1 outside*
- Kenwood Stereo* (compatible with Pandora, iPod, iPad, and Sirius XM)*
- Surround Sound Stereo System
- Winegard Traveler SWM
- Color Rear Camera; Color right/left side cameras
- Aluminum Wheels
- Exterior Slide Out basement tray
- See Level II Tank Monitor*
- Wired Progressive Industries Surge Protector*
- Interior LED Lighting*
- Under Coach LED Remote Lighting*

- Zephyr Ceiling Light Treatment*
- Automatic Bed Lift with remote*
- Auto Motion Day/Night Shades*
- Custom Computer Desk with Two File Drawers*
- Custom Side Cabinetry*
- Whirlpool Stainless Steel Side by Side Residential Refrigerator *
- 2014 6 Michelin Tires*
- 2013 New Batteries*
- Magnum ms 2812 Inverter*
- Doran Tire Monitoring System 360RV10*
- Service: Tiffin Motorhomes, Red Bay, Al., Freightliner Factory Service Center, Gaffney, SC, Custom RV, Red Bay, Al.,Florida- You!

AUTOMOTIVE

STANDARD EQUIPMENT ON ALL MODELS:

- Raised Rail Chassis Frame
- Adjustable Fuel & Brake Pedals
- 55" Wheel Cut
- VIP 18" Steering Wheel
- Air Ride (4 Air Bags)
- Allison 3000 MH 6-speed Automatic Transmission with Lock-up
- Fog Lights
- Cruise Control
- Air Brakes with Automatic Slack Adjusters & ABS
- Daytime Running Lights
- Emergency Start Switch

CHASSIS	36 QSH	40 QDH	40 QSH	40 QTH	42 QRH
Freightliner Cummins ISC 360 HP / 1050 lb. Torque	S	S	S	S	NA
Spartan Cummins ISC 8.3-liter Engine 360 HP / 1050 lb. Torque	NA	NA	NA	NA	S
GVWR	32,000	32,000	32,000	32,000	42,600
GAWR - Front	12,000	12,000	12,000	12,000	12,600
GAWR - Rear	20,000	20,000	20,000	20,000	20,000
GAWR - Tag Axle	NA	NA	NA	NA	10,000
GCWR	42,000	42,000	42,000	42,000	52,600
Alternator Amps	170	170	170	170	160
Wheel Base	228	266	266	266	296
Exhaust Brake	S	S	S	S	NA
Two-Stage Engine Compression Brake	NA	NA	NA	NA	S
Tire Size	275/80R22.5	275/80R22.5	275/80R22.5	275/80R22.5	275/80R22.5
Trailer Hitch Capacity	10,000	10,000	10,000	10,000	10,000
Fuel Tank (Gallons) - Dual Fuel Fill	100	100	100	100	100
Aluminum Wheels	0	0	0	0	S

OVERALL	36 QSH	40 QDH	40 QSH	40 QTH	42 QRH
Overall Length - Approximately	36' 9"	40' 5"	40' 5"	40' 5"	42' 5"
Overall Height with Roof Air (Maximum)	12' 7"	12' 7"	12' 7"	12' 7"	12' 7"
Interior Height	84"	84"	84"	84"	84"
Overall Width	101"	101"	101"	101"	101"
Interior Width	96"	96"	96"	96"	96"
Fresh Water (Gallons)	90	90	90	90	90
Black Water (Gallons)	45	45	45	45	45
Grey Water (Gallons)	70	70	70	70	70
LPG Tank (Gallons; can only be filled to 80% capacity)	35.7	35.7	35.7	35.7	35.7
Minimum Garage Height	13'	13'	13'	13'	13'

STRUCTURAL

STANDARD EQUIPMENT ON ALL MODELS:

- Laminated Floor, Sidewall & Roof
- Steel/Aluminum Reinforced Structure
- One-Piece Fiberglass Roof Cap

EXTERIOR

STANDARD EQUIPMENT ON ALL MODELS:

- Fiberglass Front & Rear Caps
- Dual Fuel Fills
- Large Tinted One-Piece Windshield
- Heated Power Mirrors with Remote Adjustment
- Single Motor Intermittent Wiper
- Gel-Coat Fiberglass Walls
- Full Body Paint
- Deadbolt Front Entrance Door
- Double Electric Step
- Dual Pane Windows
- Exterior Patio Light
- Manual Door Awning
- Automatic Patio Awning
- Slide-Out Awning(s)
- Wheel Liners
- Custom Mud Flap
- Exterior Swing-Out Storage Doors with Gas Shocks
- Single Handle Lockable Storage Door Latches
- Lighted Exterior Storage
- Roof Ladder
- Docking Lights
- Heated Water & Holding Tank Compartments
- Four 5 v Auxiliary Batteries
- Park Telephone Ready
- Black Tank Flush System
- Water Filter
- Undercoating
- 110 v Exterior Receptacle
- 110 v/12 v Converter
- TV Antenna
- Power Fantastic® Roof Vent with 3-Speed Fan
- A/C Condensation Drains
- Back-Up Camera
- Cable Ready TV
- 2000 Watt Inverter with 100-Amp Converter & Transfer Switching

EXTERIOR CONTINUED

	36 QSH	40 QDH	40 QSH	40 QTH	42 QRH
Spotlight	0	0	0	0	0
Automatic Door Awning	0	0	0	0	0
Window Awning Package (Two Windows)	0	0	0	0	0
Aluminum Wheels	0	0	0	0	S
Exterior Slide-Out Storage Tray	0	0	0	0	0
Hadley Air Horns	0	0	0	0	0
In-Motion Satellite Dish (HD Ready)	0	0	0	0	0
Automatic Satellite Dish (HD Ready)	0	0	0	0	0
Exterior 32" LCD TV	0	0	0	0	0
Side Cameras Activated with Turn Signals	0	0	0	0	0
Chrome Mirrors	0	0	0	0	0
7.5 kw Onan® Manual Slide-Out Generator	S	S	S	S	NA
10.0 kw Onan® Manual Slide-Out Generator	NA	NA	NA	NA	S
Atwood Electric Automatic Leveling Jacks	S	S	S	S	NA
HWH Hydraulic Jacks	0	0	0	0	S
Two 15,000 BTU Low Profile Roof Air Conditioners with Heat Pump	S	S	S	S	NA
Three Low Profile Roof Air Conditioners with Heat Pump	NA	NA	NA	NA	S

DRIVER'S COMPARTMENT

STANDARD EQUIPMENT ON ALL MODELS:

- Flexsteel® Ultra Leather Power Driver & Passenger Seats with Foot Rest
- Padded Dash
- Custom Infrared Repeater
- Dual Dash Fans
- Snack / Beverage Tray with Drawers
- Dual 12 v Dash Receptacle
- Single CD Player & AM/FM Stereo
- Back-Up Color Monitor
- Fire Extinguisher
- Full-Width Power Windshield Shade
- Windshield Privacy Shades
- Driver / Passenger Side Window Solar / Privacy Shades
- Computer Slide-Out Tray in Dash

	36 QSH	40 QDH	40 QSH	40 QTH	42 QRH
Sirius® Radio (Requires Subscription)	0	0	0	0	0
Computer Navigational System	0	0	0	0	0
32" LCD Front Overhead TV	0	S	S	0	0

LIVING AREA/DINETTE

STANDARD EQUIPMENT ON ALL MODELS:

- Booth Dinette with Laminate Tabletop & Solid Surface Edging

	36 QSH	40 QDH	40 QSH	40 QTH	42 QRH
Free-Standing Dinette with Built-in Cabinets	0	0	0	0	0
32" LCD TV in Entertainment Center	S	NA	NA	S	S

PASSENGER'S SIDE

	36 QSH	40 QDH	40 QSH	40 QTH	42 QRH
Ultra Leather DE Sofa Bed	5-62"	5-74"	5-74"	5-74"	5-74"
Cloth DE Sofa Bed	5-62"	5-74"	5-74"	5-74"	5-74"

DRIVER'S SIDE

	36 QSH	40 QDH	40 QSH	40 QTH	42 QRH
Cloth DE Sofa Bed	5-74"	5-74"	5-74"	5-74"	5-74"
Cloth Air Coil® Hide-a-Bed	0	0	0	0	0
Ultra Leather Air Coil® Hide-a-Bed	0	0	0	0	0
Ultra Leather DE Sofa Bed	0	0	0	0	0
Ultra Leather Magic Bed	0	0	0	0	0
Cloth Magic Bed	0	0	0	0	0
Leather Euro Recliner with Computer End Table	0	0	0	0	0

KITCHEN

STANDARD EQUIPMENT ON ALL MODELS:

- Solid Surface Countertop with Stainless Steel Sink
- Sink & Stove Cover Racks (Underneath Sink)
- 4-Door Refrigerator with Ice Maker
- 3-Burner Cooktop
- Solid Surface Sink & Stove Covers
- Single Lever Sink Faucet with Sprayer
- Built-in Soap Dispenser
- Convection Microwave

	36 QSH	40 QDH	40 QSH	40 QTH	42 QRH
Gas Oven	0	0	0	0	0
Expand-an-Island	S	S	S	S	S

BATH

STANDARD EQUIPMENT ON ALL MODELS:

- Medicine Cabinet with Vanity Light
- Solid Surface Vanity Top & Bowl
- Glass Shower Surround
- 3-Speed Fantastic® Fan
- Skylight in Shower
- Custom Raised Panel Bath Door
- Glass Shower Door

	36 QSH	40 QDH	40 QSH	40 QTH	42 QRH
Fiberglass Molded Garden Tub	NA	NA	S	NA	NA
Fiberglass Molded Shower	S	S	NA	S	S

BEDROOM

STANDARD EQUIPMENT ON ALL MODELS:

- Wardrobe
- Under Bed Storage
- 26" LCD TV
- LPG Leak Detector
- Bed Comforter with Throw Pillows
- Pillow Top Mattress
- Carbon Monoxide Detector
- Chest of Drawers with Laundry Hamper

	36 QSH	40 QDH	40 QSH	40 QTH	42 QRH
King Bed Mattress	NA	0	0	0	0
Select Comfort (Dual Control) Bed System – Queen	0	0	0	0	0
Select Comfort (Dual Control) Bed System – King	NA	0	0	0	0

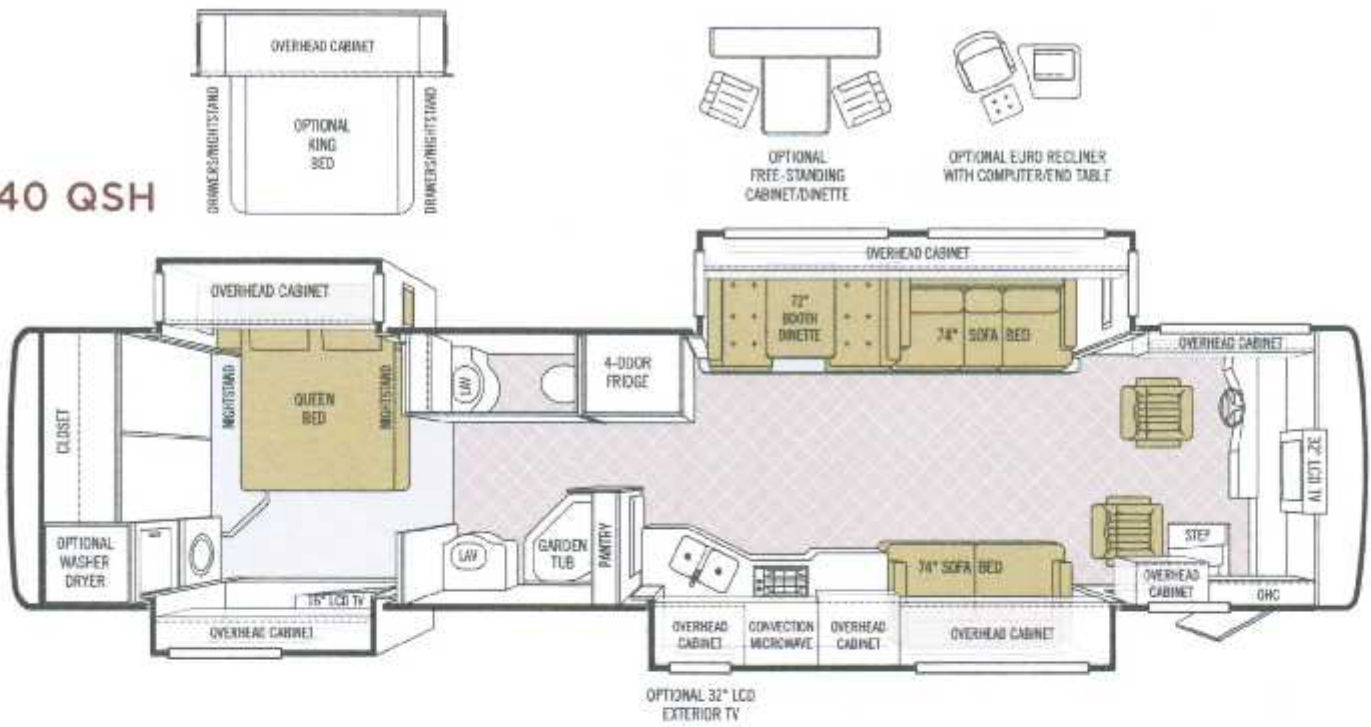
GENERAL INTERIOR

STANDARD EQUIPMENT ON ALL MODELS:

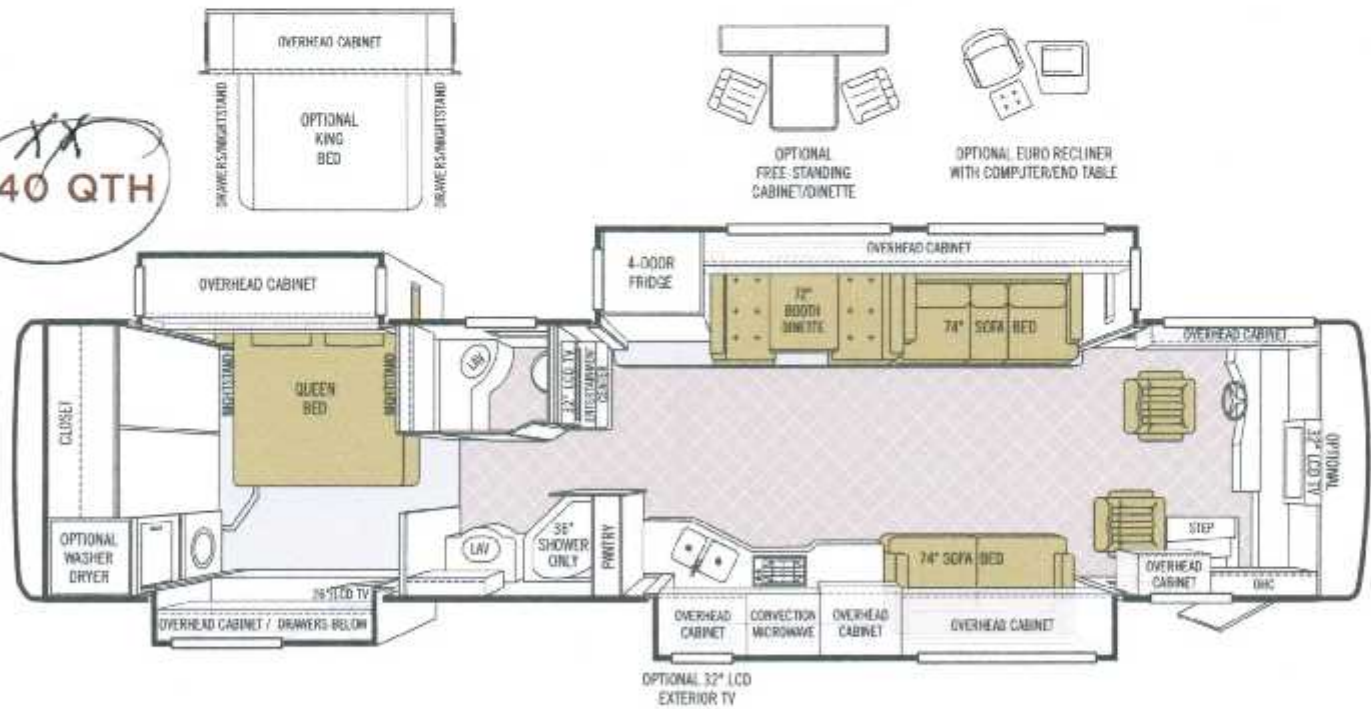
- 7' Ceilings
- Complete Cable Wiring Interfacing with Surround Sound & Satellite Receivers
- 12 v Disconnect Switch
- Soft Touch Vinyl Ceiling
- Home Theatre Sound System with Concealed Speakers
- Fantastic® Power Roof Vents with 3-Speed Fans
- Ceramic Tile Floor in Kitchen, Living Area, Bath & Entry Landing
- Medium Alderwood Cabinetry
- Tank Level Monitor System
- Carpeting in Bedroom & Driver's Compartment with Scotchgard®
- Day / Night Pleated Shades
- Smoke Detector
- Raised Panel Hardwood Cabinet Doors & Drawers
- 12 v Fluorescent Lights
- 10-Gallon Gas / Electric Water Heater
- Complete HD Ready System (HD Satellite Receivers Required)
- Air Driven Step Well Cover

	36 QSH	40 QDH	40 QSH	40 QTH	42 QRH
Natural Maple Cabinetry (Simulated)	0	0	0	0	0
Cherry Bark Cabinetry (Simulated)	0	0	0	0	0
Combo Washer / Dryer	0	0	0	0	0
Stacked Washer / Dryer	0	0	0	0	0
Central Vacuum Cleaner	0	0	0	0	0
Two Ducted Furnaces (One 30,000 BTU & One 35,000 BTU)	S	S	S	S	S

40 QSH



40 QTH



Additional floor plans may be available on our website: www.tiffinmotorhomes.com